

ILLUMINATION

2021-2022

Ruth & Norman Rales Jewish Family Services Magazine



Marilyn & Stanley Barry to Be Honored as Rales Humanitarians of the Year at This Year's "Odyssey Into the Future" Annual Gala See page 5 for details.

**Therapeutic & Family Resource Center
Set to Open in Spring 2022**

See pages 22-23 for details.



**JFS Mourns the Loss of
Bart Weisman (z"l)**

See pages 8-9 for details.





Are Your Valuables Insured?

Safeguard your Homes, Collectibles, Artwork, Fine Wines, Jewelry, and Automobiles from damage or theft. Our direct relationships with highly-rated, financially stable global insurers mean you'll rest more easily knowing your valuables are protected.

Let our Private Client team advise you on the best strategy for protecting your valuable assets.

For more information:

561.409.2428

privateclient@centuryra.com | centuryra.com



Building relationships. Providing protection. Ensuring solutions.

Boca Raton | Wynwood | Ocean Reef

Proudly representing the following AM Best highly-rated insurers.

pure
INSURANCE

CHUBB®

AIG

VAULT

LLOYD'S



**JFS Premier
Agency Sponsor**

Ruth & Norman Rales
Jewish Family Services
Help. Hope. Humanity.

Dear Friends,

I am thrilled to be able to share our latest edition of Illumination Magazine. We have so much to share about what's happening at the agency, as we have added several new programs and continue to provide COVID-related assistance.

Read more about the Therapeutic and Family Resource Center 22-23, our newest endeavor to serve families raising children with special needs, which is scheduled to open in Spring 2022. We look forward to educating the community on this new project and have launched our Capital Campaign to raise \$4M to support on-going programming. A special thank you to the Rales Foundation for providing the seed money to start the project.

Included in this edition is a special tribute to our beloved Bart Weisman (z"l). Bart led an extraordinary life and those of us who had the pleasure of knowing him will truly miss his big smile, charming laugh and positive attitude. I consider Bart one of my mentors at JFS, having benefitted greatly from his wisdom about seniors, philanthropy, family and life in general. His legacy will live on through the programs at the Weisman Center and his family. Read more on Pages 8-9.

Thank you for your continued support of the agency and our clients during the past year. We are so lucky to live in a community that cares so deeply for those less fortunate. I look forward to seeing all of you very soon.

Happy Reading!



Danielle N. Hartman
President & CEO



Contents

- 4 Mail Pouch
- 5 Agency News
- 10 Food & Financial Assistance
- 14 Counseling & Mental Health Services
- 18 Senior Services
- 20 Weisman Delray Community Center
- 22 Therapeutic & Family Resource Center
- 26 Center for Families & Children
- 28 Belford Family Volunteer Department
- 30 Development
- 34 JFS Presents the "Tonight Show" Annual Gala Recap
- 36 Reflections of Hope Recap
- 38 Annual Meeting Recap
- 40 Community Partners

2021-2022 BOARD OF DIRECTORS

OFFICERS

Chair
Board of Directors
Stephen Mendelsohn

Treasurer
Rick Paul

Secretary
Judi Donoff*

Immediate Past Chair
Lisa Goodman*

Vice Chairs:
Financial Resource
Development
Lorraine Udwin

Strategic Planning
Ron Gallatin

Food Programs
Robin Rubin

Personnel
Ed Levine

Board Development
Diane Feldman

Legal
Marcia Langley

President & CEO
Danielle N. Hartman,
MNM

Board Members

Neil Baritz
Linda Behmoiras
Larry Blair*
Marshall Burack
Ellen Channing
Stephanie Chestnov
Andrea Corn
Mark Dern
Samy Dwek
Larry Feldman
Ivan Gefen*
Jane Gortz
Lori Gottsegen
Alana Hoch
Ben Hoffman
Marissa Hollander
Lynny Isdamer
Jerry Israel

Darryl Kogan
Roger Leavy
Wendy Legum
Michael Lipton
Laura Litinsky
Danita Nias
Natalie Pelavin
Debby Rales
Ron Reshefsky*
Robin Siegal
Jeff Spero
Marcia Tabatchnick
Lorraine Udwin
Vicki Weinstein
Rabbi Greg Weisman
Carol Winig
Teri Wolofsky

Honorary Board Members

Marilyn Barry
Abbe Becker
Debbie Belford
Joy Binkovitz*
Toby Cooperman
Jane Cornell
Anne Jacobson
David Katzman
Lisa Kaufman
Jon Kimmel*
Rabbi Dan Levin
Nancy Schiller
Jill Viner
Marilyn Weinberg
Barton Weisman
Ilene Wohlgenuth*

*Past Chair

Mail Pouch

Client Messages & Comments



BEREAVEMENT GROUP

Dear JFS,

I have always heard that "life can change in an instant." When it happened to me, upon the death of my husband, my world went blank. I was at a total loss at how to go on.

I learned about JFS' bereavement group through my synagogue. Although I was not sure I could talk about my loss in front of others, I felt I had to try something. I attended my first group over a year ago and continued to participate as often as possible, even when the group transitioned over to zoom. All the JFS facilitators have been remarkable and empathetic. I learned so much, and just as importantly, I realized that the other group members understood the utter devastation that I felt.

This program is life-changing. I am so grateful to have the support of the program and from the other participants as I move forward in my life.

- Karen, Boca Raton

SPECIAL NEEDS

Dear JFS,

I wanted to extend the deepest gratitude possible. In the midst of COVID no less, JFS has lifted us up. As a single mother of a child with special needs, the weight of our situation seemed too heavy for me to carry. COVID has impacted our home, my career and my personal life. Through the financial assistance JFS provided, we are in a position to move forward. Thank you for throwing us a "life vest" so we would not drown.

- Shani, Boca Raton

ADELE LOEB & LES NACKMAN MEALS ON WHEELS PROGRAM AND SHOP & SHARE PROGRAM

Dear JFS,

I don't know what I would do without JFS! I do not have any family nearby. Being legally blind, I have been dependent on public transportation. I stopped using it once COVID hit. I became very anxious, as I was not sure how I was going to eat.

I learned about JFS through some of my neighbors. The Adele Loeb & Les Nackman Meals on Wheels and the Shop & Share programs have literally been lifesavers. I receive delicious meals for the week delivered directly to me every Friday and groceries delivered to me a couple of times a month. Thanks to JFS, I can remain in my home and don't need to worry about having enough food to eat.

- Rina, Delray Beach

WEISMAN CENTER

Dear JFS,

One of the most significant impacts that COVID had on me was the closing of my beloved Weisman Center. The Center motivates me to get up in the morning. I was losing faith that it would ever re-open.

The day finally arrived this summer. I was picked up by a friendly driver of the Rales Rides bus. When I entered the center, it was like I was a lost person who had been found. It's the only way I can describe how I felt! Seeing the staff's beautiful smiles and the warm welcome was like a homecoming celebration. I appreciate all of the effort and energy put into reopening the Center safely.

- Carol, Delray Beach

CAREGIVER RESOURCES AND RESPITE PROGRAM

Dear JFS,

As a primary caregiver for my 97-year-old mother and my husband, who suffered a brain injury 9 years ago, my days are filled with the stress of medical appointments and managing our household.

I don't know how I would survive without the Caregiver Resources and Respite Program. I have learned how to manage stress and carve out time for myself. The Program provides me with a better perspective on how to deal with life on a day-to-day basis. The warmth and support from other group members means the world to me.

- Louise, Delray Beach

Honorees Set for JFS “Odyssey Into the Future” Annual Gala



Marilyn & Stanley Barry Rales Humanitarians of the Year Award

For more than forty years, Marilyn and Stanley Barry's extraordinary vision and generosity have impacted the lives of many throughout the United States and abroad.

Marilyn & Stanley grew up in NY, built successful careers and raised a wonderful family. In 2000, they moved their residence to South Florida and became more active in their philanthropic endeavors. They have held Board and Executive Committee positions with JFS, where they chaired many events and assisted in securing properties allowing JFS to grow. They play a major role with Boca Raton Regional Hospital, where Stanley is currently Chair of the

Foundation. They support many other charities, including but not limited to, FAU, Jewish Federation, Donna Klein Jewish Academy, American Friends of Magen David Adom through the purchase of 5 ambulances, and the Blood Bank in Israel.

Their philanthropy and love of their family and friends knows no bounds. With the addition of two daughters-in-law and five incredible granddaughters (one who is married and one who recently became engaged, both to wonderful men), their hope is that their family will continue to grow and prosper, as well as their love of charitable giving by helping others to advance in their endeavors to succeed.

Gregory Fried/Gregory's Fine Jewelry Corporate Leadership Award

Gregory Fried, a well-known jeweler for over 20 years, opened Gregory's Fine Jewelry in May of 2005 in Delray Beach, in the Shoppes at Addison Place, across from Morikami Museum. In 2007, while on vacation in Costa Rica, he expressed interest in giving back to the community, and like they say, the rest is history.

Gregory's generosity extends to many local organizations, including: The Tri-County Humane Society, Boca West Foundation, In Jacob's Shoes, JAFCO, Florence Fuller, Donna Klein Jewish Academy, Adolf and Rose Levis JCC and of course, Ruth & Norman Rales Jewish Family Services.

Gregory lives by a simple mantra, “I am, therefore I do.” Together with his manager Barbara Kallen, he is able to take care of the clients' needs and be involved in the community. Meeting new people and helping raise money for charity is what gives him his heart of gold.



For reservations or more information, visit ralesjfs.org/gala or contact Jill Waldman, JFS Director of Special Events at 561.852.5013 or JillW@ralesjfs.org.

Marie Osmond, Iconic Entertainer, to Keynote Reflections of Hope Luncheon

Marie Osmond has spent 5 iconic decades in the entertainment business performing as a successful singer, television performer, talk show host, dancer, actor, author, entrepreneur and public speaker. She has continued to maintain relevance, remaining an instantly recognizable figure across the globe.

Marie Osmond is an ardent advocate when it comes to mental health. Having battled depression herself, Marie has shown us, time and again, the importance of breaking the stigma of mental illness and the impactful ways she has been able to deal with her struggles with strength and dignity.

As a philanthropist, she co-founded Children's Miracle Network Hospital, which has raised over \$7 billion dollars for children to date. Marie continues to perform and raise money for children's hospitals, research and awareness. She has influenced countless audiences and benefited an innumerable amount of lives worldwide.



For reservations or more information, visit salesjfs.org/ROH or contact Jill Waldman, JFS Director of Special Events at 561.852.5013 or JillW@salesjfs.org.

Save These Dates!

ODYSSEY INTO THE **FUTURE**

JFS ANNUAL GALA 2021 - DECEMBER 9, 2021

REFLECTIONS OF **Hope** LUNCHEON

BREAKING THE STIGMA OF MENTAL ILLNESS • FEBRUARY 10, 2022

2022 GREAT GOLF
FOR A GREAT CAUSE **MARCH 21, 2022**



...and keep an eye out for a **BRAND NEW EVENT**
coming in **MAY 2022!**

JFS Strategic Plan - A New Road Map to Greater Growth, Success and Client Service

While responding to unprecedented community needs during the COVID-19 pandemic, JFS has been deeply engaged in planning for the future service needs of Greater Boca Raton, Delray Beach and Highland Beach. As the largest human services agency in south Palm Beach County, JFS has adopted a new road map to greater growth, success and client service.

Rather than preparing the usual five-year Strategic Plan, JFS has created a three-year Road Map that can be modified and updated as we become more clear about the course of the pandemic and the resulting community needs. For 42 years, our community has relied on JFS to adapt and grow in response to essential local needs.

Over the past year, JFS jumped into emergency mode to serve many neighbors newly in need while maintaining aid to those who must continue to depend on us. Careful planning alongside with crisis efforts, was absolutely essential to meet the increased need.

The extent of the agency's critical impact on the community is clear from some service highlights of the past year, in which JFS:

- In addition to regular emergency financial assistance, JFS has distributed over \$340,000 in COVID-related financial assistance to date, a number that will continue to increase.
- Absorbed a 41% increase in the number of seniors needing home-delivered meals.
- Brought virtual programming to pandemic-homebound seniors. When COVID suddenly halted in-person activities that the 900 members of the Shirley & Barton Weisman Delray Community Center enjoyed daily through their 35,000 visits per year, arrangements were made so that these suddenly homebound members could access programming online with their own tech support.
- Helped over 1,000 job seekers through Career & Employment Services programming.

The Road Map reflects how the future holds additional challenges for the agency to increase its capacity and to help the community's large populations of seniors and families. It sets the course to address these challenges through five goals:

- Adapting infrastructure to accommodate the agency's growth and new work models, including expanded use of technology.
- Enabling the community's burgeoning homebound senior population to age in place at home.
- Planning for needs of at-risk families and children, including those with special needs.
- Sustaining the agency through diversified revenue streams.
- Engaging community members, including younger seniors in skilled volunteering and getting the word out about the affordable, accessible services people need and may not know exist.





We Remember Bart Weisman (Z"L)

1927 - 2021

Barton "Bart" Weisman was driven by his inherent desire to quietly help others. A longtime, dedicated philanthropist and advocate, his life journey helped thousands in need, including seniors, and medically fragile children. On August 8, we lost this modest, staunch pillar of our community, whose legacy lives on.

Born in Philadelphia in 1927, then raised in New York and New Jersey, Bart studied business at Lehigh University after learning that Yale "had their quota of Jews." After graduation, and service in the New York National Guard, he spent two extremely difficult years in Korea as a first lieutenant in command of an ambulance platoon of combat medics. Bart took great pride in his service to his country and was active in the Korean War Veteran's Association that met regularly at the Weisman Center in Delray.



Upon returning from Korea, Bart began his business career in varied fields before developing his first Nursing Facility in Bristol, Pennsylvania. From there, he developed and operated additional facilities throughout New Jersey and Florida. Bart was instrumental in creating one of the nation's first long-term pediatric ventilator and fragile care units, known as Voorhees Pediatric Facility. Subsequent programs include Weisman Children's Rehabilitation Hospital, multiple Pediatric Medical Daycare and Outpatient locations, and the Kidz Korner, a Pediatric Fragile Care Unit, in Plantation, Florida. Bart retired in 2003 and remained Chairman of the organization, NuVision Management.

In 1993, Bart founded the New Jersey Pediatric Patient's Charitable Trust Fund. This non-profit has enriched the lives of medically fragile children through funding for recreational, educational or adaptive equipment, home modifications, and an annual summer camp for ventilator dependent children. This organization has raised and given through grants over three million dollars to needy children.

Along the way, a blind date led to his marriage of over 60 years to Shirley, an attorney who has shared the couple's philanthropic passion. Their children, Marcia and Andrew, and five grandchildren, join her in carrying on Bart's legacy.

We will always be grateful that in 1977 this remarkable couple chose to make their home in Florida.

Bart, along with Shirley, have also had a special place in their hearts to see that our local seniors, including Holocaust survivors, had what they needed to lead long, fulfilling lives. This is reflected most notably, through their naming of the state-of-the-art Shirley and Barton Weisman Delray Community Center. Opened in 2010 and now boasting 1,000 members, the Weisman Center enables JFS to provide extensive programming and services to otherwise isolated seniors.

Beyond his philanthropy, Bart's care and pride in its profound impact were evident in his frequent visits to the Weisman Center, where he danced with the ladies at the annual "Senior Prom," met with the Jewish Korean War Veterans right until his passing, and so much more. Members would stop to tell him that without the Weisman Center, they would not be alive.



Bart's strong involvement with JFS also extended to serving on the Board, Executive Committee and other committees, where he lent his passion and acumen. In 2014, JFS presented the Rales Humanitarian of the Year Award to Bart and Shirley, in honor of their broad and deep legacy of charitable giving locally, nationally and in Israel.

Throughout his life's many pursuits, Bart Weisman was known for his honesty, integrity, generosity and loyalty, his love of family and Jewish tradition. May his memory be for blessing.



Truist Foundation Grant To Support JFS Homeless Prevention For Older Adults

JFS received a \$25,000 grant from the Truist Foundation to support the JFS Homeless Prevention Services (JFSHPS), for seniors (60 years of age and older) in Boca Raton, Delray Beach, and Highland Beach. The program gives seniors access to short-term financial assistance and "HomeShare" roommate matching services.

The national housing crisis has impacted Palm Beach County heavily. Many older adults and families in the community are living on fixed incomes. One unexpected emergency could push them into homelessness.

Home Sharing is a service that pairs senior "hosts" (homeowner) with pre-screened and qualified senior "guests" (renter) to share their home or to match seniors seeking a "roommate" to share living accommodations.

JFS has been providing homeless prevention services for the past 40 years through our financial assistance program and our expanding continuum of care model for seniors, including case management, financial assistance, and volunteer matching. The grant provided by the Truist Foundation provides JFS with additional resources to support affordable senior housing in our community.

"Our partnership with Ruth & Norman Rales Jewish Family Services to help alleviate the burdens of continuously rising local housing costs aligns with our purpose to build better lives and communities," said Tony Coley, South Florida regional president for Truist on behalf of Truist Foundation.

For additional information regarding JFS Homeless Prevention Services, contact Elissa Brown Gregory, JFS Senior Case Manager-Financial Services at 561.852.3333 or ElissaG@ralesjfs.org.



Thanksgiving-To-Go

JFS distributed over 500 traditional Thanksgiving meals to vulnerable JFS older adult clients, many of whom are Holocaust survivors, and to residents and participants of JARC Florida, a fellow Federation campus agency that assists people with intellectual and developmental disabilities.

Thanks to the generosity of longtime Thanksgiving Banquet sponsors, Etta & Raymond Zimmerman and Edith Stein, the efforts of Event Co-chairs Amy Ross and Robin Rubin and the dedication of over 100 volunteers, we were able to deliver a traditional Thanksgiving experience to so many in an untraditional way.

This effort took place in lieu of JFS' Annual Thanksgiving Banquet, which for over 25 years was held Thanksgiving Day and fed over 700 people who would have otherwise been alone for the Holiday.



12th Annual Woodfield Feeds the Hungry



Thank you to the residents of the Woodfield Country Club for their donations and volunteering during the 12th Annual Woodfield Feeds the Hungry.

Event Co-chairs Larry Blair, Michele Fisher, Gina and Greg Shugar, with heroic efforts by Roy Camhi, created another successful event despite the challenges due to COVID. Woodfield's generosity resulted in over 500 pounds of food being donated to the Jacobson Family Food Pantry and over 125 needy families in our community receiving bountiful packages that included complete traditional Thanksgiving meals, produce, and non-perishable food items. Woodfield families also created many Thanksgiving cards and pictures that accompanied the food.

Stonebridge Country Club Residents Brighten The Spirit Of JFS Clients During Chanukah

For the past 13 years, residents of Stonebridge Country Club in Boca Raton, have raised funds through the Jewish Federation of South Palm Beach County to benefit JFS clients of the Jacobson Family Food Pantry during Chanukah. Thank you to event chairs Floris Leipzig and Sharon Gene, and all of the residents who participated. Their efforts resulted in the largest amount raised in the program's history. Thanks to Stonebridge, seniors and families in need received meals, featuring traditional Hanukkah delicacies, latkes, and doughnuts, along with gift cards.



Clients Receive Much Needed Hurricane Supplies



Thanks to our incredible volunteers, board members, and staff, our 2021 Hurricane Supply Delivery was a true success!

Due to their dedication to helping our neighbors in need, JFS delivered supplies to over 400 households. Another 600 homes received hurricane supplies through JFS staff delivery.

The supply delivery is only part of the JFS Hurricane Preparedness Program. Seniors living alone and residing in Boca Raton, Delray Beach, and Highland Beach, can register (or have their families do so) with JFS to be on our storm response list by visiting ralesjfs.org/stormreg. JFS utilizes pre-screened volunteers, board members and staff to reach out to seniors before and after a major weather event.

Those wishing to volunteer as part of the JFS Storm Recovery Team can do so by visiting ralesjfs.org/stormvol.

Passover Delivery

Thanks to the 120 volunteer teams who delivered Passover groceries to over 500 JFS client households this year (as part of JFS' overall distribution to 1,100 households).

How appreciative were the clients to receive their Passover package? Here is one client's note:

"I must share the joy and gratitude of receiving the Passover package from JFS. Now I can enjoy celebrating Passover with familiar food and a haggadah. I am so blessed to be part of this wonderful sharing of love and joy, in a time like this. Thank you"

A special thank you to event sponsors: Debbie & Howard Belford, Suzanne Jacobson, Jewish Federation Donors from Addison Reserve Country Club.



High Holidays Meal Delivery

JFS helped their neighbors prepare to celebrate the Jewish High Holidays by delivering traditional festive meals along with challah, apples, and honey to clients of JFS' Jacobson Family Food Pantry. Each volunteer team delivered packages containing several meals (for Rosh Hashanah and for before Yom Kippur) to over 250 households. Because of volunteer and client safety, meals were placed outside of the clients' homes.

JFS Community Partner, JARC Florida, prepared the meals delivered by our volunteers.

JFS and HOT Partner to Help Our Community

Rosa, 80, resides in Boca Raton. Rosa has a heart condition that requires a pacemaker and defibrillator. Due to her heart condition, she finds it difficult to accomplish simple tasks such as shopping for groceries, housekeeping and bathing. Living entirely off her modest social security income, her medical expenses depleted her savings and put her under tremendous financial stress. She knew that many of her friends receive help from JFS. Although she held on for as long as she could, she had to reach out to JFS for help.

Rosa was surprised at how easy it was to qualify and enroll in the Jacobson Family Food Pantry program. Additionally, she receives Walmart gift cards through JFS' partnership with Hands on Tzedakah (HOT), as well as, subsidized homecare services to assist her with her cooking, cleaning and shopping.

Thanks to JFS, she is able to remain independent and enjoy her quality of life. She is very grateful and continually expresses her gratitude to JFS and Hands on Tzedakah for all they have done for her!



CREATE YOUR OWN FOOD DRIVE!

IT'S SIMPLE AND FUN!

STEP 1:

Who will be the food drive organizer?

This person will be responsible for coordinating all aspects of the food drive to complete it successfully.

STEP 2:

Determine the items you would like to collect.

YEAR-ROUND FOOD PANTRY NEEDS INCLUDE:

- | | | |
|-----------------|----------------------------|------------------------------|
| • Tuna/Salmon | • Pasta | • Vegetarian Soup |
| • Peanut Butter | • Tomato Sauce | • Vegetarian Beans |
| • Jelly | • Rice/Quinoa/
Couscous | • Instant Mashed
Potatoes |
| • Canned Fruit | • Canned Vegetables | |

OR

CUSTOMIZE A THEME FOR THE FOOD DRIVE

STEP 3:

Decide where and when your food drive will take place.

STEP 4:

Register for your food drive and receive a JFS Food Drive Kit to help you get started.

STEP 5:

Collect, Collect, Collect!

Contact: Julie Weisberg, Senior Director of the Jacobson Family Food Pantry and Food Pantry Outreach
561.852.3333 or JulieW@ralesjfs.org



***** Specializing in moves for
Seniors and Individuals with
Disabilities... for 18 years *****

- Plan • Sort / Downsize
- Sell / Donate • Pack
- Move • Unpack / Organize
- Prep Residence to Sell • Stage

954-345-6683

www.AMoveMadeEasy.com



**A+ Nationally Accredited
Licensed, Bonded, Insured
Local and Long Distance Moves**

DON'T LET THEM DO IT ALONE!

A Move Made Easy, Inc. SM

will handle ALL the details from beginning to end for their local or long distance relocation.



JFS Counseling & Mental Health Services Expands Psychiatry Services as Partnership with FAU Enters Second Year

Through our second year of partnership with Florida Atlantic University's (FAU) Schmidt College of Medicine, JFS has added four psychiatry residents to JFS' Counseling and Mental Health Services Department. The eight total residents within the psychiatry program enable JFS to provide services to more clients including children, adolescents, and adults.

JFS clients will continue to benefit from the passion and innovation of the psychiatry residents, including the experience of psychiatrist Dr. Ashley Beattie, who specializes in children and adolescents, as well as general psychiatry. Dr. Beattie will be working under the guidance of Dr. Stuart Goldman, Professor of Psychiatry at FAU, who will also be supervising the psychiatry program. Dr. Goldman has worked for Boston Children's Hospital (BCH) and Harvard Medical School.



JFS is one of the only non-profits serving Palm Beach County that offers fees on a sliding scale, providing those with and without insurance, much-needed access to affordable mental health services. This combination of academia and practice helps ensure the veracity of care provided by JFS Counseling & Mental Health Services. During the pandemic, JFS has been providing telehealth appointments.

Get Your Green On

During Mental Health Awareness Month, JFS joined other community organizations around Palm Beach County for the "Get Your Green On" campaign to raise awareness for mental health and to let the community know that it's "OK to not be OK" and ask for help when needed.

I Got My Green On For Mental Health Awareness Month

#GetYourGreenOn #GYGO2021 #MHAM #NotAlone



Tribute Cards for Sale



Packaged 5 cards per set or variety pack with one of each available

We are excited to announce that pre-packaged JFS Tribute Cards are now available for purchase. We offer 6 different pre-packaged options that can be mailed to your home. Proceeds from the purchase of these cards support the programs and services of JFS.

Each package consists of (5) tribute cards and sells for \$36 each. Choose from five unique occasions and one mixed pack option. Occasions include: Congratulations, Get Well, Happy Birthday, Sympathy and Thinking of You.

Order today by visiting ralesjfs.org/tributecards.

Pride Market

JFS participated in Compass Center's Palm Beach Pride Market, during Pride Month this past June. The free event held at Bryant Park on the City of Lake Worth Beach Intracoastal, featured food and crafts vendors, along with providers servicing the LGBTQ+ community.



Proud to be an LGBTQ+ Ally



Pride Day

#ralesjfs #pride #ally #lgbtq #loveislove #equality

LGBTQ+ TEEN GROUPS

A Joint Program of the Faulk Center for Counseling and Ruth & Norman Rales Jewish Family Services

This FREE LGBTQ+ Teen support group meets virtually to provide a safe space for teens to discuss their experiences as they progress through their journey of self-discovery.

Wednesdays 6:00 - 7:00 p.m.

To receive Zoom link to LGBTQ+ Teen Group, register with The Faulk Center for Counseling by calling **561.483.5300**





FUNERAL DIRECTORS SINCE 1892

Guttermans Warheit

MEMORIAL
CHAPEL

*One of The Largest
Family Owned & Operated
Funeral Professionals
Since 1892*

Directors:

**PHILIP GUTTERMAN • STEVEN KANOWITZ
KENNETH J. LASSMAN**

Leading Pre-Arrangement Specialists for all your Medicaid & Estate Planning Needs.
In Home Appointments Available

7240 North Federal Hwy, Boca Raton FL 33487

1-800-992-9262

Serving Miami-Dade, Broward, Palm Beach & Martin Counties

In Greater New York, Guttermans Inc.: ROCKVILLE CENTRE, L.I. 516-764-9400
WOODBURY, L.I. 516-921-5757 • QUEENS 718-896-5252 • BROOKLYN 718-284-1500

MONUMENTS BY GUTTERMAN'S www.guttermansinc.com

Welcome to
amazon smile You shop. Amazon gives.

Selecting JFS as your designated charity is simple.

On your first visit to AmazonSmile, you will be prompted to select a charitable organization to receive donations from your future eligible AmazonSmile purchases. Search for Ruth & Norman Rales Jewish Family Services. Amazon will remember your selected charity whenever you shop at smile.amazon.com or with AmazonSmile activated in the Amazon Shopping app, and then every eligible purchase you make through AmazonSmile will result in a donation to JFS.

If you currently have another charity designated and would like to change it to JFS, **visit smile.amazon.com/** change, or tap "AmazonSmile" within the Settings menu in the Amazon Shopping app on your phone and select "Change your charity". Your future AmazonSmile purchases made after changing your charity will count towards your newly selected charity.

- Amazon will donate 0.5% of the price of your eligible AmazonSmile purchase to Ruth & Norman Rales Jewish Family Services Inc. whenever you shop on AmazonSmile.
- AmazonSmile is the same Amazon you know. Same products, same prices, same service.
- Support JFS by starting your shopping at smile.amazon.com

JFS Receives Grant to Assist Seniors with Technology to Address Challenges of Isolation

JFS, along with Alpert Jewish Family Service in West Palm Beach, is among a selected Network of Jewish Human Service Agencies (NJHSA) Member Agencies who have received a grant from the Jewish Federations of North America's (JFNA) Center for Aging and Trauma. The funding is to support any older adult with a personal history of trauma by procurement and utilization of technology to address the challenges associated with senior isolation.

Participants in the Program include veterans, refugees, victims of domestic violence or those struggling with mental health because of their history of trauma. The NJHSA collaborative program utilizes broadcast and video technology developed by Uniper Care, a start-up technology company with roots in Israel.

Through our Strategic Plan, JFS had identified the use of technology to help care for older adults as a primary focus. This grant fits nicely with our goals and objectives related to using technology as a feasible way to engage seniors who would otherwise have no way to interact with others socially and move towards healing their experienced trauma.

Café Europa-To-Go

JFS, long-time Cafe Europa event sponsor, Jill Viner, and many of volunteers collaborated to deliver a Cafe Europa experience to hundreds of local Holocaust survivors.

The semi-annual event, which traditionally brings Holocaust survivors together to socialize and celebrate life, was modified due to COVID. Volunteers delivered a lavish luncheon to-go that included Chanukah goodies - latkes and sufganiyot (donuts). We look forward to celebrating together in-person as soon as it is safe to do so. Thank you to Jill Viner, who once again, generously sponsored this event.



Choose Collaborative

South Palm Beach County - Collaborative Law Group

Sheila C. Furr, Ph. D., ABN

Licensed Psychologist | Florida Supreme Court Certified Family Mediator / Neutral Facilitator Collaborative Process
One Boca Place, 2255 Glades Rd - #419A, Boca Raton, FL 33431 |
(561) 470-7110, drfurr@sheilafurrphd.com





561-989-0441

- ✦ Providing Nursing, Physical, Speech and Occupational Therapy
- ✦ Covered 100% under Medicare
- ✦ Over 20 years' experience in the Home Care business



Lisa Kaufman-Bensmihen, MBA
President/CEO

Professionally and personally, Jewish Family Services has come to mean something deeply and profoundly gratifying in my life. Being part of the Jewish Community of Boca Raton is and will continue to be an integral part of our mission.

Weisman Center Programming Remains Constant During COVID

Feldman Family Diamond Club

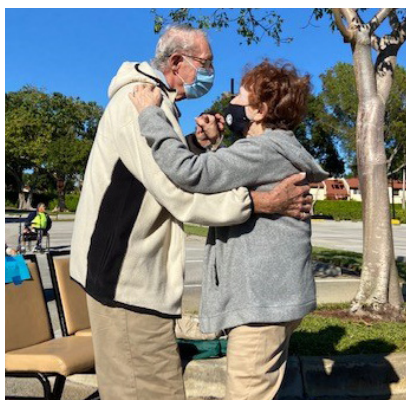
The pandemic, arguably, impacted the members of the Weisman Center the most by having to keep the Center closed for everyone's safety. But that did not stop the multiple classes, lectures, and events from being held virtually, or even hosting special events in person, albeit outside and socially distanced.

The Feldman Family Diamond Club continued its weekly program virtually, which included a speaker, entertainment and a social chat. Diane & Larry Feldman greeted Club Members outside of the Weisman Delray Community Center to mark the transition through a socially distanced drive-through line.

To learn more about the Diamond Club, contact Regina Packer, Feldman Diamond & Adventure Club Coordinator at 561.558.2100 or ReginaP@ralesjfs.org.



Larry & Diane Feldman with
Diamond Club Member



Outdoor Concerts

The JFS team works tirelessly at finding ways to keep seniors connected safely. Outdoor, socially distanced concerts were held at the Weisman Center for Weisman Center Members. Holocaust Survivors, who are agency clients, were treated to beautiful afternoons of great entertainment thanks to the funding through the Jewish Federations of North America (JFNA).

Of course, at a JFS event, no attendees leave empty-handed. Each guest received a goody bag to take home!

During the pandemic, the Weisman Center offered a diverse range of online programs and classes for its Members.

Annual memberships to the Center start at \$80 and make a great Holiday gift to yourself, or for seniors you may know. Contact Risa Demato, VP, Weisman Center, for more information at 561.558.2100 or e-mail: RisaD@ralesjfs.org.

Blume Café at Weisman Center Receives Makeover

Estelle Lashen, Weisman Center Member, has always looked at the Weisman Center as her "home away from home". And, just like one would look to beautify and improve one's home, Estelle has always been on the lookout to do so at her beloved Weisman Center.

When Estelle noticed that some seniors had trouble navigating the entrance to rooms within the Center, Estelle made a donation to fund handicap accessible doors (that opened with a push of a button).

This past spring, in anticipation of re-opening the Center, we received delivery of Estelle's latest "home improvement" project - new lobby chairs and a stunning Blume Café makeover. Thank you Estelle for your generosity and to Judi Donoff, (past JFS Board Chair) for her interior design talents.



Estelle Lashen



For Helen, There's No Place Like Home

And that's the way it should be. Helen called JFS at Home and was matched with a pre-screened, quality caregiver so she can continue to age in place with the dignity and independence she deserves.

WE CAN DO THE SAME FOR YOU!

CareLink: Geriatric Care Management | Companion Services | Private Duty Non-Medical

561.852.HOME (4663) | www.jfshome.org



Coming Spring 2022

The Therapeutic & Family Resource Center is on it's way!



JFS will be expanding services currently provided to the community through our Special Needs Department in a new initiative called the Therapeutic & Family Resource Center (TFRC). Thanks to the generous seed funding from the Norman and Ruth Rales Foundation, JFS is creating a "one stop shop" where all family needs can be met in one place, removing the barrier of affordable access.

Types of Services Provided Through The TFRC

Applied Behavioral Analysis	Occupational Therapy
Case Management*	Physical Therapy
Counseling (Child and Family)*	Psychiatry (Child and Family)*
Family Consultations*	Psychological Testing*
Financial Assistance*	Social Skills Groups
Hydrotherapy	Speech Therapy
Information & Referral Services*	Support Groups*: Family/Sibling/Grandparent/Caregiver
Multi-Sensory Room	Workshops*

*Currently Provided

Affordable Access To Comprehensive Therapies

JFS will accept most major insurances. Understanding that a majority of our families need financial assistance to help bridge the gap between what they can afford and the true cost of care, a large portion of the TFRC's budget is allocated towards financial assistance so that no family is turned away.

The objectives of the TFRC are to:



Provide children with varying needs and abilities affordable access to treatment and therapies that allow them maximum realization of their developmental, educational, and personal potential.



Equip parents and other caregivers with the necessary information and support to ensure a therapeutic continuum.



Provide the education and guidance needed to build stronger families.

Why JFS?

JFS is uniquely able to provide support through our spectrum of programs that serve the entire family. Because the TFRC offers a variety of services from a centralized location, the burden to families will be reduced while access to care will be greatly improved. And, with a long history of strong community collaboration, JFS is easily able to partner with other agencies, schools and programs that also serve children with special needs.

Why Now?

Recent estimates in the United States show **1 in 6** — or about **17%** of children aged 3 through 17 years— have **at least one developmental disability**. This is an increase over the prior two reporting periods.

Locally, the School District of Palm Beach County has reported that **31,700 children in grades K-12 have a developmental or intellectual disability**. **The pandemic has only compounded challenges** and the burden to pay for much-needed therapies is often out of reach for many families.

For additional information on the programs and services of the Therapeutic Family & Resource Center, contact Beth Levine, JFS Chief Operating Officer at 561.852.3333 or BethL@ralesjfs.org

There are many naming and other support opportunities available at all giving levels.



Find out how you can be a part of this community-wide project. Contact **Cindy Orbach Nimhauser, JD, JFS Chief Development Officer/Senior Vice President** at **561.852.3279** or **CindyN@ralesjfs.org**.

In Memoriam – Val Chevron

This past spring, Val Chevron, Theater Director at the Weisman Center, passed away.

Val had been involved in teaching acting throughout Palm Beach County and bringing "Acting for Seniors" to our members. Over the 10 years of dedicated volunteer service at the Weisman Center, this evolved into Musical Theater. Val was instrumental and tenacious in obtaining what he needed for performances: a stage, lighting, playbill, piano player. We will miss his relentless passion and devotion to the Weisman Center.

· IN MEMORIAM ·

Val Chevron



Theater Director

Shirley & Barton Weisman Delray Community Center



Tribute Bricks



Ruth & Norman Rales
Jewish Family Services
Help. Hope. Humanity.



**Shirley & Barton Weisman
DeLay Community Center
Walkway Tribute Bricks**

We are pleased to offer you an opportunity to honor a loved one, remember a special occasion or show your support for the agency with a personalized message on a tribute brick.

Brick are available for \$180 each.

Help pave the walkway to the Community Center.

Please contact Cindy Orbach Nimhauser, JD, Chief Development Officer,
Senior VP 561.852.3379 or CindyN@ralesjfs.org for more information

"Our Space can be YOUR Space"

Rooms are available to rent, weekdays
and weekends
at the Weisman Center

Providing set up for:

Conferences

Social Functions

Retreats

Complete Kosher Catering Available

Special Rates For Not For Profit Organizations



Please contact Risa Demato, VP of the Weisman Center
561.558.2100 or RisaD@ralesjfs.org for more information.



FAU MEDICINE®

FLORIDA ATLANTIC UNIVERSITY



PRIMARY CARE LEAD



Leonard Berkowitz, D.O.

Board Certified in Family Medicine

INTEGRATIVE HEALTH PHYSICIAN



Joanna Drowos, D.O.

Board Certified in Preventive Medicine, Family Medicine and Osteopathic Manipulative Therapy

**MARCUS INSTITUTE OF
INTEGRATIVE HEALTH**
at FAU MEDICINE

- ✓ Personalized time and attention.
- ✓ Routine check ups.
- ✓ Medical and laboratory tests.
- ✓ Most major insurance plans accepted.
- ✓ Managed Medicare available.
- ✓ Geriatric consultations.
- ✓ Osteopathic Manipulative Therapy.
- ✓ Nutrition counseling.
- ✓ Virtual yoga classes.
- ✓ Telehealth services available.

Galen Medical Building
880 N.W. 13th Street
Suite 400, Boca Raton, FL 33486

To make an appointment call:
561-566-5328 (561-566-5FAU)
Visit us on the web:
www.faumedicine.org

JFS Programs Collaborate to Offer Help to the Community

JFS Community Outreach and Domestic Abuse Education and Action Departments co-facilitated groups at Florence Fuller Child Development's summer camp. Age-appropriate topics covered during the groups included mindfulness, emotional regulation, team building, and communication.

Through fun, interactive games and activities, we were able to empower the group with important lessons. For example, we taught mindfulness by practicing thoughtful eating with M & M's; deep breathing, using balloons that were turned into stress balls; teaching about emotions by playing "emotion charades," and watching clips from the movie "Inside Out". Our clinicians also served as an outlet for the children and encouraged one-on-one communication.

Fresh Start is a new, collaborative initiative within

JFS between Career & Employment Services and Domestic Abuse Education & Action, providing case management, resources, and necessary training to attain financial independence for survivors of domestic abuse, including women and children.

This three-part webinar focuses on overall employability, including financial literacy, resume writing, traditional and virtual interview skills, and job readiness. The curriculum addresses strategies on how women, many of whom have been out of the workforce for years and are straddled with low self-esteem, can compete in a competitive job market. Participants will receive sessions with our career strategist and workforce developer, as well as access to support groups and additional optional workshops.

Domestic Abuse Education & Action Department provides the following services:

- Case Management
- Coaching and Safety Planning
- Consultation and Counseling
- Crisis Intervention
- Education & Outreach
- Information & Referral
- Support Groups
- Workshops for Teenagers and Adults
- Financial Assistance — subsidies to augment the cost for housing, utilities, car payments or transportation costs, childcare, food distribution, job retraining, and certifications.

Danielle Greenblatt, LCSW | Director of Community Outreach | 561.852.3333 | DanielleG@ralesjfs.org

Lorrie Conglose, MS, LMHC | Director of Domestic Abuse Education & Action | 561.852.3333 | LorrieC@ralesjfs.org

Career & Employment Services Partners with Manpower on the "Work from the Safety of Your Own Home" Program

The "Work from the Safety of Your Own Home" program helps mature adults return to work in a positive and productive manner. The Program's focus is for workers to fulfill the role of virtual call center representative. This has created a win-win situation for employers and candidates as experienced workers, a group often overlooked, can fulfill available job vacancies.

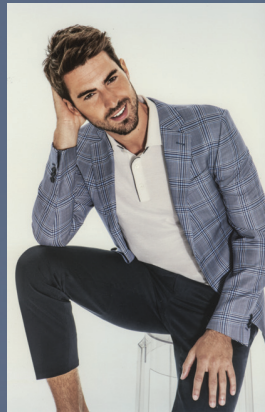
Since the positions are virtual, people can fill these jobs anywhere in the country and allow candidates to work from home, where older adults can feel safe from health concerns.



World. Class. Clothes.



STYLING MEN OF EXCELLENCE
FOR 38 YEARS.



CANALI
RAVAZZOLO
TRUSSINI
SAMUELSON
ZANELLA



Made To Measure



GUY LA FERRERA

561•620•0011

21306 St. Andrews Blvd. • Boca Raton

GuyLaFerrera.com

Sales@GuyLaFerrera.com

STIFEL | The A & R Wealth
Management Group

Focused on
Special Needs
Children and Adults

Our mission is to develop customized investment strategies, deliver timely information, and provide support to clients whose loved ones have special needs.



Alan Linker, AIF®, ChSNC®
Senior Vice President/Investments

(561) 982-2668 direct
alan.linker@stifel.com



Randy Reichenberg
Registered Client Service Associate

(561) 982-2609 direct
reichenberg@stifel.com

www.AandRwealthmanagement.com

(561) 982-2700 main | (800) 223-7658

2650 North Military Trail, Suite 400 | Boca Raton, Florida 33431

Stifel, Nicolaus & Company, Incorporated | Member SIPC & NYSE | www.stifel.com



True Treasures

True Treasures has 3 stores in Palm Beach County
to sell your True Treasures

Donate items to Ruth & Norman Rales Jewish Family Services
You receive a tax deduction and JFS receives the proceeds!

Call Paul Shine @ 561-625-9569-102
to discuss your True Treasures

"Accepting Fine Consignments Daily"

Delray Beach
14555 S. Military Trail
Atlantic & Military Trail
561-699-9797

North Palm Beach
111 US 1
561-625-9569

Palm Beach Gardens
Home Depot Plaza
3918 Northlake Blvd
561-694-2812

Please Give the Gift of Time

VOLUNTEER OPPORTUNITIES



JFS volunteers enable us to reach out into the community in ways that we never could with staff alone. The skill set, passion, and expertise of our volunteers make our programs extraordinary.

- ✦ JFS offers volunteer opportunities on weekdays, weekends, evenings, and holidays to accommodate all types of schedules.
- ✦ Our volunteers are comprised of snowbirds, snowflakes, teens, families, families with special needs, working professionals, and retirees.
- ✦ JFS volunteer programs service the community in many different ways, including; senior services, food and financial assistance, career and employment services, mentoring, and counseling and mental health services.

ADELE LOEB & LES NACKMAN MEALS ON WHEELS 🧑🧑🧑🌞

Volunteer drivers deliver prepared kosher meals every Friday morning to individuals who no longer cook. Designated routes are in the Boca Raton/Delray areas.

ADMINISTRATIVE & CLERICAL SUPPORT 🧑🧑🌞

Volunteers assist with filing, phone calls, and data entry as needed by the Volunteer Department or other JFS staff.

CAREER & EMPLOYMENT SERVICES 🧑🌞🧑

Volunteers assist clients with mock interviews and mentoring. There are also opportunities to facilitate job readiness workshops.

CHORE CORPS (ADULT & TEEN) 🧑🧑🧑🌞🚫🚫

Volunteers are matched with JFS clients to perform minor household maintenance needs such as; organizing a spice rack, changing light bulbs, decluttering, etc.



COMMUNITY MENTORING PROGRAM 🧑🌞🚫🚫🚗

Volunteer mentors are matched with a child 6-18 years who is in need of a role model and friend and would benefit from a long-term, stable relationship with a non-parental adult. Our mentors and mentees meet regularly for a minimum of 4 hours each month and make a one-year commitment to the program.

CORRESPONDING WITH SENIORS 🧑🧑🧑🌞🌙

Enhance the experience of the holidays by creating colorful cards for Rosh Hashanah, Thanksgiving, Chanukah, Passover, or even birthdays or other special occasions to be inserted into the grocery bags delivered to our food pantry clients. Write encouraging letters to seniors to uplift them and decrease feelings of isolation and depression.



COUNSELING SUPPORT GROUPS 🧑🌞🌙🚫

Volunteers with a master's degree in any mental health field can help to co-facilitate support groups with a JFS staff person in the community. The volunteer works with the outreach coordinator assigned to that location, working together to plan and lead the group.

DOMESTIC ABUSE EDUCATION AND ACTION PROGRAM 🧑🧑🌞

Volunteers provide assistance to facilitate the support and compassion needed for those who are victims of all kinds of abuse. The TARA program (Teens Against Relationship Abuse) enables volunteers to learn how to identify the signs of abuse and how to protect themselves and others.

FELDMAN FAMILY DIAMOND ADVENTURE CLUBS 🧑🌞

Volunteers meet every Monday morning at the Weisman Center in Delray Beach. This is a social group where volunteers assist by checking in guests, leading discussions on current events, setting up, and serving coffee and snacks. Volunteers also assist with outside group bus excursions.



FRIENDLY VISITOR 🧑🧑🧑🌞🌙🚫🚫

Volunteers "visit" an isolated senior in their home or assisted living facility for at least four hours a month for socialization and conversation. Volunteers and their clients determine the schedule and frequency of the visits.

HOLIDAY MEAL DELIVERIES 🧑🧑🧑🌞🚚

Volunteers deliver 3-5 holiday meal packages to households in the Boca/Delray area. These deliveries typically occur on Sunday mornings and last approximately two hours.

JACOBSON FAMILY FOOD PANTRY 🧑🧑🧑🌞

Volunteers assist in the pantry, located in Delray Beach, restocking shelves and preparing food bags for home delivery. Volunteers deliver pre-bagged food packages every other Thursday morning to residents of Century Village in Boca Raton, and to the Gould and Weinberg residents on the campus of the Jewish Federation in West Boca Raton. Volunteers can also organize a community toiletry drive or food drive for the pantry.

KIBBITZ AND RIDE 🧑🧑🌞🌙🚫🚫🚗

Volunteers drive an individual in need of transportation to a variety of locations such as medical appointments, grocery shopping or other errands in the Boca/Delray areas. Trips are booked in advance and drivers are scheduled as available. Mileage reimbursement is provided to volunteers.

**PEER SUPPORT CIRCLE
SUBSTANCE USE PROGRAM** 🧑🌞🌙🚫🚫

Volunteers focus on making recovery connections for those with substance use related issues in our community. Peer Support volunteers may be paired with community members based on shared experiences or participate in groups that offer educational opportunities and resources.

RUSSIAN CLUB 🧑🌞

Russian speaking volunteers assist the Program Director in locating new Holocaust survivors for the program and help organize and run this social club.

**SHIRLEY & BARTON WEISMAN DELRAY
COMMUNITY CENTER** 🧑🧑🌞

Volunteers enhance the experience for Members at the Center by teaching a class, helping with special events and programs, and assisting in the Blume Café or at the front desk reception area. Days and times are flexible. No weekends are required.

SHOP & SHARE 🧑🧑🧑🌞🌙🚫🚫

Volunteers grocery shop for clients who are no longer willing or able to shop for themselves. Volunteers receive the grocery list from the client over the phone in advance.

They are reimbursed for items purchased by personal check upon delivery, where they help put the groceries away and spend time socializing. Volunteers and their clients determine the schedule and frequency of the trips. We recommend 2 shopping trips per month.

SOCIAL MEDIA INFLUENCER 🧑🧑🌞🌙🚫🚫

Become a JFS Social Media Influencer and help us promote our volunteers and services by liking, sharing and posting about the agency and our events on your social media. Pre-screened influencers will have the chance to take over the JFS social media platforms for one Tuesday a month.

**TECHNOLOGY SOS (ADULT & TEEN)
SUPPORTING OUR SENIORS** 🧑🧑🌞🌙🚫🚫

Volunteers assist seniors who are not comfortable with technology, helping them use their cell phones, tablets or computers in their homes. Volunteers and their clients determine the schedule and frequency of the visits as needed.

Russian speaking volunteers needed to help with Russian speaking clients.

**TELEPHONE REASSURANCE** 🧑🧑🌞🌙🚫🚫

Volunteer as a special phone friend to homebound seniors by making calls 2-3 times a week. Call times and frequency can be determined between the volunteer and the client.



Level II background
check required



Day



Evening



Motor vehicle
check required



Weekend



Individual



Teen (Community
Service Hours
Provided)



Family



Groups

**For more information or to fill out a volunteer application visit www.ralejsjfs.org/volunteer
or contact Kim Edelberg, Co-Director, Belford Volunteer Department, KimE@ralejsjfs.org | 561.852.3333**

Message from Cindy Orbach Nimhauser Chief Development Officer, Senior Vice President

When I wrote my letter last year for Illumination, I discussed my "gratitude attitude". This year, the word that reverberates in my brain is "HOPE". While not shocking, as "Help, Hope, Humanity" is JFS' tagline, I am looking at that word and its meaning in a way that I never have before.

I hope that in the very near future, we can gather together without concern of any kind.

I hope that the feelings of caring and concern for those less fortunate among us (which has grown this past year exponentially) only continues on its upward path.

I hope that my future emails do not have to start with "I hope you and those you love are all healthy".

It's not that I can't ask that...I just feel compelled to every time.

This past year, we were given even more hope in the form of the \$200,000 match challenge for Covid relief put forth by Mason Slaine. Not only did all of you step up to meet this challenge, but it was also surpassed!

We are so grateful to Mr. Slaine for his incredible generosity, and his caring for his neighbors in need. They were given hope for a better future ahead. Thank you all for your inspiring gifts!

Our fundraising season begins on December 9th, with the return of the Annual Gala at the Polo Club. We are thrilled to be honoring Marilyn & Stanley Barry with the Rales Humanitarian of the Year Award, and Gregory's Fine Jewelry/ Gregory Fried with the Corporate Leadership Award. We hope to see you in December-be it in person or virtually, as well as at our Reflections of Hope Luncheon on February 10th, along with Great Golf for a Great Cause on March 21st. We are also planning a new event in May.....too early for details!

In closing, certain words of the Four Tops song, "Reach Out- I'll Be There" come to mind-"Now if you feel that you can't go on, Because all of your hope is gone, Reach out... I'll be there"...

We - as a community - reached out to those whose hope was gone. And, we were there....and will always be there, thanks to all of you!



Sincerely,

Cindy Orbach Nimhauser
Chief Development Officer, Senior Vice President

So Many Ways To Give

31

Annual Giving

Every contribution helps give hope to the people who need it most. Your annual donation supports the full range of vital programs and services Ruth & Norman Rales Jewish Family Services (JFS) provides to the community.

Memorial and Tribute Gifts

Gain the satisfaction of giving a truly meaningful gift by honoring a special occasion or making a gift in memory of someone with your tax-deductible tribute to JFS.

Legacy Gifts

A legacy commitment is your way to leave financial resources to JFS for the future needs of our community. Legacy commitments will help your family realize their philanthropic vision.

Corporate Sponsorship Programs

Many opportunities exist to become a corporate sponsor in support of the agency. Packages include support of events, departments, newsletters & more.

There Are Many Ways to Include JFS in Your Legacy Planning

SEEING IS BELIEVING

Judi & Craig (z"l) Donoff have seen first-hand how the many JFS programs assist our community from children to seniors; that's why the Donoffs have chosen to convert their Donor Advised Fund into a permanent endowment to ensure the continuity of these programs after their lifetime.

GIVING IS A FAMILY TRADITION

Illana and Samy Dwek wanted to continue their family's tradition of supporting their local community and always giving to those most in need. That is why the Dweks chose to make a bequest in their will to JFS, ensuring the continuity of our programs after their lifetime.

HOW BLESSED ARE WE?

This question is frequently posed by Diane & Larry Feldman when surrounded by the seniors they support through the Feldman Family Diamond & Adventure Clubs. That is why the Feldmans chose to make a bequest in their will to JFS, ensuring the continuity of their programs after their lifetime.

MAKING AN IMPACT

Michele and David Katzman are dedicated to helping others. In order to ensure the continuity of their impact after their lifetime, they chose to name JFS as a beneficiary in their IRA.

YOU CAN TOO. FIND OUT HOW.

Contact Cindy Orbach Nimhauser, JD,
Chief Development Officer, Senior Vice President

Call 561.852.3279 | Email cindyn@ralesjfs.org | Visit ralesjfs.org



CREATE A JEWISH LEGACY



Planning for the future by supporting JFS today!

Imagine creating a lasting testament to the value that you hold most dear. Creating your legacy is not only deeply fulfilling, it also requires far less out-of-pocket funding than you may realize. In fact, legacy gifts come with tax breaks and benefits that make it a smart move for anyone's estate plans. The JFS Visionary Society recognizes individuals who have secured our future through a planned gift commitment of \$100,000 or more. Please join the following donors who have notified us of their plans to include JFS in their estate plans:

VISIONARY SOCIETY

JACK ALEXANDER*
ANONYMOUS
LARRY BLAIR
THE ESTATE OF HARRIET BRYER*
JEFFREY & RICHARD BRYER
SHIRLEY A. COHEN
TOBY & LEON COOPERMAN
JANE & ALAN* CORNELL
THE ESTATE OF KAROLA EPSTEIN*
DIANE & LARRY FELDMAN
MIRIAM FRIEND*

MERYL & RON GALLATIN
ANNE & NORMAN JACOBSON
LISA KAUFMAN
BETTY & JON KIMMEL
DEBRA & GERALD KRAMER
APRIL & ROGER LEAVY
ROXANE FRECHIE LIPTON
ADELE LOEB & LES NACKMAN
MADELINE* & EUGENE* PARGH
RUTH* & NORMAN* RALES
FOUNDATION

ALISON & DAVID SCHIMEL
DOROTHY* & SIDNEY* SCHUMAN
BERENICE SHANKERMAN*
ELEANOR & SIDNEY*
SHANKERMAN
THE ESTATE OF BERNARD
SHERMAN*
THE ESTATE OF ETHEL SNYDER*
SHIRLEY & BARTON WEISMAN
ILENE & PETER WOHLGEMUTH
JACQUELINE & SIDNEY* WOLGIN



CREATE A JEWISH LEGACY

ANONYMOUS
ANONYMOUS
ANONYMOUS
ANONYMOUS
ANONYMOUS
ANONYMOUS
ANONYMOUS
ANONYMOUS
ANONYMOUS
CINDY & ALAN BERGMAN
LARRY BLAIR
ETHEL BLITZ
SHIRLEY BRENNER*
THE ESTATE OF ROSE BRESLOFF*
JUDITH CHASON
LAUREN A. COHEN
SHIRLEY A. COHEN
TOBY & LEON COOPERMAN
JANE & ALAN* CORNELL
JUDI & CRAIG* DONOFF

ILLANA & SAMY DWEK
KAROLA EPSTEIN*
DALE & ED FILHABER
BARBARA FINKELSTEIN
ALEX FINKLER*
MIRIAM FRIEND*
MERYL & RON GALLATIN
STEPHANIE & ADAM GINSBURG
DANIELLE HARTMAN
SHARON KAMBER
MICHELE & DAVID KATZMAN
LISA KAUFMAN
BETTY & JON KIMMEL
GAIL & KEITH KRONISH
ELYSSA KUPFERBERG
MATTHEW KUTCHER
BETH & PERRY LEVINE
RACHELLE LIPMAN
ADELE LOEB & LES NACKMAN
MARVIN MILLER*

BEVERLY NEUMETZGER*
LOTTIE NILSEN
CINDY & BRUCE NIMHAUSER
MADELINE* & EUGENE* PARGH
NATALIE PELAVIN
SUSAN & BARRY PODOLSKY
GAIL & BARRY PRESS
AMY & RONALD RESHEFSKY
RICHARD RIGGS*
HEIDE & JEFFREY RUTMAN
HARRIET SACHER
THE ESTATE OF MILDRED
SCHAIKOWITZ*
ALISON & DAVID SCHIMEL
SYLVIA & ARTHUR SCHREIBER*
CATHERINE & ROGER SCHWARTZ
MICHELE SHEPPARD
BERNARD SHERMAN*
CAROL & STEPHEN WINIG
ETTA & RAYMOND ZIMMERMAN

CREATE A WISH LEGACY

Dr. Andrea Corn, Psy.D.



Boca Raton Psychologist

Offering:

- Child and adolescent psychotherapy
- Adult psychotherapy
- Family therapy
- Sports psychology consulting

Contact Dr. Andrea Corn today:

www.DrAndreaCorn.com
 Psyd@DrAndreaCorn.com
 (954) 942-3344

Dr. Andrea Corn ("Dr. Andrea") is a licensed clinical psychologist who has spent over 20 years assisting children, adolescents and adults on a wide range of psychological issues. Dr. Andrea has appeared in the media discussing various mental, emotional and behavioral health issues. With Ethan J. Skolnick, Dr. Andrea co-authored the highly acclaimed youth sport/parenting book, *Raising Your Game—Over 100 Accomplished Athletes Help you Guide your Girls and Boys Through Sports*.



STIFEL

Elyssa J. Kupferberg, MBA

Director/Investments

(561) 868-8698 direct | (561) 901-9018 cell
 (844) 736-9541 toll-free | (561) 868-8724 fax

elyssa.kupferberg@stifel.com

440 Royal Palm Way, Suite 201
 Palm Beach, Florida 33480

Stifel, Nicolaus & Company, Incorporated | Member SIPC & NYSE

Anne Goldberg

The Savvy Senior

Technology taught by a
 Senior, for Seniors, since 2013
 iPhone/Android and PC instruction

Call or Text: 954-536-8008
 SavvySeniorAnne@gmail.com



CREATE A JEWISH LEGACY

IMAGINE A FUTURE WHERE YOUR VALUES
 OF HELP, HOPE, AND HUMANITY LIVE ON.

With Create a Jewish Legacy, you ensure the things you value are sustained for future generations. Through a planned gift or endowment, you will:

- Ensure the viability of JFS and its programs
- Enable JFS to continue to serve the growing needs in the community
- Ensure that JFS will always be a beacon of hope in a time of crisis for those in need

Learn more about how you can establish a planned gift or endowment. Consult your trusted financial or legal advisor to discuss how legacy gifts can positively impact your estate plan, while ensuring the future of the community you love.

For a legacy conversation, contact Cindy Orbach Nimhauser, Chief Development Officer, Senior VP at 561-852-3279 or CindyN@ralesjfs.org



Ruth & Norman Rales Jewish Family Services Goes Virtual for the 2020 JFS Annual Gala Presents the "Tonight Show" Starring Jason Alexander

It was truly a night to remember! Although the 2020 JFS Annual Gala Presents the "Tonight Show" was held virtually, it certainly went off without a hitch. Event Co-Chairs Stephanie Chestnov, Judi Donoff and Wendy Legum, outdid themselves in pivoting this annual in-person event to create a unique and remarkable online experience. The gala featured an interactive cocktail party and a riveting performance by Jason Alexander (of Seinfeld fame), presented by Marilyn and Jay Weinberg. Guests were encouraged to dress to impress in their finest "comfort couture," which they did and sponsors were recognized for their ongoing support of JFS work in the community.



A SPECIAL THANK YOU TO OUR VALUED SPONSORS

Marilyn & Stanley Barry
Toby & Leon Cooperman
Jane Cornell
Meryl & Ron Gallatin
Lynny & Scott Isdner
Anne & Norman Jacobson
Harriet & Ed Levine
Barbara & Jeffrey Rosenberg

Sherri Samuels
The Sandler Foundation
Alison & David Schimel
Velia Sweet
Marilyn & Jay Weinberg
Shirley & Bart Weisman



Gala Co-Chairs (L-R): Stephanie Chestnov, Wendy Legum and Judi Donoff





Special Guest Performance by Jason Alexander



Marilyn & Jay Weinberg



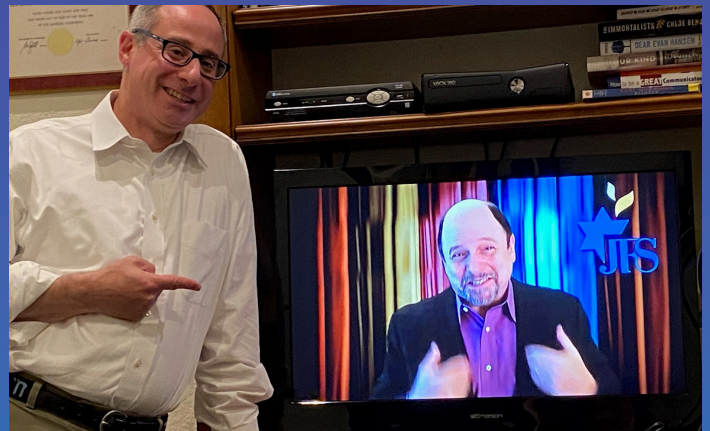
"Johnny Carson"



Lorraine Udwin



Mark & Karen Dern



Rabbi Dan Levin (and Jason)



Judi Donoff



Teri Wolofsky and Arlene Herson

Oscar Winner Glenn Close Delivered Keynote Address at 2021 Reflections of Hope Virtual Event

Seven-time Academy Award-nominated actress Glenn Close was the keynote speaker at this past year's JFS Reflections of Hope which took place virtually last February. Glenn Close weaved together stories about her life in film, including anecdotes behind some of her greatest roles. She also reflected on how continually reinventing herself made for a lasting, illustrious career. As a mental health advocate, Close shared personal stories of her own and others' struggles with mental illness and discussed ways we can all help to end the stigma. She wrapped up her presentation with a question-and-answer session moderated by event emcee, Glenn Glazer.



Keynote Speaker, Glenn Close

This year's luncheon also featured a performance by singer & songwriter Nikki Lickstein, a rising star in country music and a south Florida native. The 20 year-old Nashville resident shared her story about suffering from mental illness from a young age and the effect COVID has had on her mental health.

A new addition to the event was JFS' One Stop Shop, which provided five days of online shopping at participating merchants the week of the event, along with daily presentations focused on soothing your mind, body and spirit. A percentage of the proceeds benefited JFS' Counseling and Mental Health Services.

Reflections of Hope was created to break the stigma associated with mental illness, a critical issue affecting one in four adults. Proceeds from the luncheon will benefit JFS' Counseling & Mental Health Services, including the Welcome Home Program. Thanks to Event Co-Chairs Marissa Hollander and Laura Litinsky for creating an engaging event experience.



Musical Guest, Nikki Lickstein

Thank you to our Sponsors!

Grand Benefactors

Lori & Gregg Gottsegen
Robin & Gary Rubin
Olivia & Gerald Shapiro

Honorary Chairs

Judi Donoff
Nancy Schiller

Sponsors

Beau Ties, Ltd/Greg Shugar
Century Risk Advisors
CBIZ MHM, LLP
Meryl & Ron Gallatin

Lori & Gregg Gottsegen
Marissa Hollander
Anne & Norman Jacobson
Harriet & Ed Levine

James Litinsky
Laura & Steven Litinsky
Robin & Gary Rubin
The Sandler Foundation

Olivia & Gerald Shapiro
The Boca Raton Observer
Ticho Foundation
Shirley & Bart Weisman





Event Grand Benefactors, Olivia Shapiro, Robin Rubin and Lori Gottsegen



Glenn Glazer and Glenn Close



Event Co-Chairs, Laura Litinsky and Marissa Hollander



Olivia and Gerald Shapiro



Robin & Gary Rubin

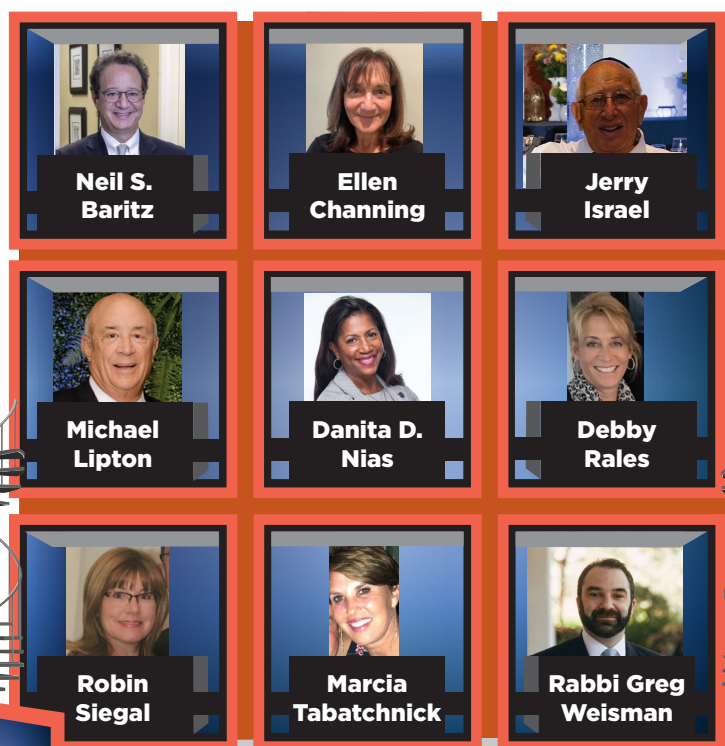
JFS Holds its First Ever Virtual Annual Meeting in April 2021

This past April, we held the 2021 Ruth and Rales Norman Jewish Family Services "Hollywood Squares" Annual Meeting virtually, which is the second time we've done so. A game show may have inspired the theme for the event, but the tone for the evening was serious. We installed new board leaders and members, including Steve Mendelsohn as Chair. Mendelsohn succeeds Lisa Goodman, who served a two-year term as Board Chair. We are grateful to Lisa Goodman for leading JFS through the COVID crisis with the calm, passion, and commitment she has shown in her over 20 years of service with JFS.

We also reflected on a year of rising, adapting, and growing to meet unprecedented vital community needs in the shadow of COVID-19. The slate of new and returning officers was approved to lead JFS into a further "new normal" during the 2021-2022 year.

The meeting further welcomed several new Board Members from throughout the community, including:

- **Neil S. Baritz**, Co-Founder of Baritz & Colman LLP, specializing in securities and corporate law.
- **Ellen Channing**, a Jewish community lay leader as well as hands-on volunteer in Boca Raton since 1987.
- **Larry Feldman**, Jewish Federation of South Palm Beach County Board Chair and longtime JFS volunteer and supporter.
- **Gerald (Jerry) Israel**, who spent most of his career at Chrysler Corporation in senior financial positions. A CPA, he also holds a law degree.
- **Michael Lipton**, who spends much of his time in volunteer leadership, using expertise honed in a long corporate career on behalf of the local Jewish community.
- **Danita D. Nias**, President and Chief Executive Officer (CEO) of Community Foundation for Palm Beach and Martin Counties.
- **Debby Rales**, volunteer with JFS senior activities and services among other community programs, and a Jewish Social Service Agency Board Member in Rockville, MD for 15 years.
- **Robin Siegal**, a local Jewish community leader and hands-on volunteer since 1989, has served on an array of boards and chaired numerous key projects.
- **Marcia Tabatchnick** dedicated Jewish community volunteer who was honored for her work in New Jersey.
- **Rabbi Greg Weisman**, Temple Beth El of Boca Raton, where his work includes leading the social action and social justice efforts, and outreach to the interfaith community.



Jewish Federation
of South Palm Beach
County Board Chair

Meet Stephen Mendelsohn, Chair, JFS Board of Directors

Stephen Mendelsohn was installed as JFS' Board Chair during the Agency's 2021 Annual Meeting held in April. Steve, an attorney with Greenberg Traurig, has served as the Agency's Vice-Chair of Legal for the past several years and follows Lisa Goodman's two-year term as JFS Board Chair.

Steve and his family have deep roots in Boca Raton Jewish communal life. Among his volunteer efforts, he has served the Jewish Federation of South Palm Beach County as an Officer and Executive Board member and chaired its Jewish Community Relations Council and Planning and Allocations Committee.



Introducing the 2021-2022 Officers of the Board Directors:

Chair
Board of Directors
Stephen Mendelsohn

Treasurer
Rick Paul

Secretary
Judi Donoff*

Immediate Past Chair
Lisa Goodman*

Vice Chairs:
Financial Resource
Development
Lorraine Udwin

Strategic Planning
Ron Gallatin

Food Programs
Robin Rubin

Personnel
Ed Levine

Board Development
Diane Feldman

Legal
Marcia Langley

President & CEO
Danielle N. Hartman, MNM

* Past Chair



Jewish Federation[®]
OF SOUTH PALM BEACH COUNTY

**NO MATTER
THE DISTANCE,**

we work together

to support our

community in South

Palm Beach County

and beyond.

**TOGETHER
WE** *thrive*

Join us at jewishboca.org

or call 561-852-3100 for more information.

Community is our Middle Name



Adolph & Rose Levis
Jewish Community Center



Arts, Culture
& Learning
Camp
Early Childhood
Special Needs
Sports & Wellness
Resale Boutique
Youth Programs
& Leagues

9801 Donna Klein Blvd. • Boca Raton, FL • 561-852-3200 • levisjcc.org

LEVIS JCC RESALE
BOUTIQUE—

TALK ABOUT

I M P A C T

Our boutique in East Boca Raton is so much more than great fashion finds, home furnishings and hidden treasures.

We are committed to making a difference in our community, enriching the lives of countless people in our area by:

- Funding scholarships for vital programs at our Levis JCC
- Working with many strong community organizations including Ruth & Norman Rales Jewish Family Services to assist individuals and families in times of hardship

Shop with us, donate your new or gently used treasures, or volunteer your time.

(561) 368-3665

levisjcc.org/resaleboutique

We are located in The Shops at University Park,
141 NW 20th Street, F5-F7 in Boca Raton

Follow us on Facebook at Levis JCC Resale Boutique ([levisjccresale](https://www.facebook.com/levisjccresale))
for hours, information and special sales and promotions.

LEVIS JCC
RESALE
BOUTIQUE
BOCA RATON



congregation
B'nai Israel

Making life's Jewish journey more meaningful together

We are proud to continually offer inclusive, spiritual social and educational experiences that engage and uplift the mind, body and soul.

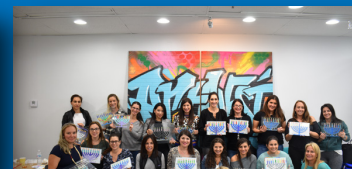
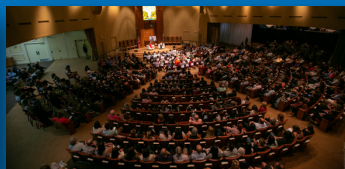
Inspiring Shabbat and Festival services

Award winning preschool and religious school

Social action initiatives for all ages

Vibrant Brotherhood, Sisterhood and social groups

Clergy-guided adult education programs



We would love for you to join our CBI family.

For membership information, please contact our
Executive Director, Steve Allen at steve@cbiboca.org

For preschool information, please contact
Allison Sands at allison.sands@cbiboca.org

For religious school information, please contact
Rachel Sherman at rachel.sherman@cbiboca.org

CONGREGATION B'NAI ISRAEL
2200 YAMATO ROAD
BOCA RATON, FL., 33431

WWW.CBIBOCA.ORG
OFFICE: 561.241.8118
SCHOOL: 561.241.1484

COMMUNITY. FAMILY. HOME.



CHABAD
WEST BOCA RATON

561-487-2934 | ChabadWestBoca.com



IMAGINE
THE POSSIBILITIES

Call (561) 507-0954 or visit
SinaiExpansion.com to learn about our
luxurious, resort-inspired retirement living.

TOBY & LEON COOPERMAN
SINAI RESIDENCES
BOCA RATON



Managed by Life Care Services®



A Jewish Federation of South Palm Beach County Affiliated Community Service Company
© 2019 Toby & Leon Cooperman Sinai Residences Boca Raton
21036 95th Avenue South, Boca Raton, FL 33428
PCOA#: 09759

**PURE
joy**



Together we share
life's most important
moments.

JOIN US

The excitement of a bar mitzvah boy celebrating his special day. The exhilaration of a family bringing their child into Jewish adulthood. The clergy and loving Temple Beth El of Boca Raton community embracing them every step of the way!

PHOTO CREDIT: CARLOS ARISTIZABAL



Schoefer Family Campus 333 SW 4th Avenue | Boca Raton, FL 33432 | 561 391 8900
Beck Family Campus 9800 Yamato Road | Boca Raton, FL 33434 | 561 391 9091
tbeboca.org



**BOCA BEACH
CHABAD**

INCLUSIVE. INSPIRING. INFORMATIVE.

**SERVING EAST BOCA, DOWNTOWN BOCA
AND THE BOCA BEACHES**

- Adult Education
- Bar/Bat Mitzvah Preparation
- Csi - Condo Social Initiative
- Daily And Weekly Shabbat Services
- Eruv
- G'mach- Chaim New Free Loan Society
- Hebrew School
- JBN - Jewish Business Network
- Menorah Lighting In The Square
- RCS - Rosh Chodesh Society
- TGIS - Thank G-D It's Shabbat - Community Dinners
- YJP - Young Jewish Professionals

WWW.BOCABEACHCHABAD.COM 561 394 9770
120 NE 1ST AVENUE, BOCA RATON, FL 33432



21300 Ruth and Baron Coleman Blvd.
Boca Raton, Florida 33428

NON-PROFIT ORG.
U.S. POSTAGE
PAID
BOCA RATON, FL
PERMIT NO.325

FOLLOW US ON SOCIAL MEDIA

Stay up to date with the latest JFS news and information by following us on Facebook and Instagram!

How to follow JFS' Facebook Page GO TO

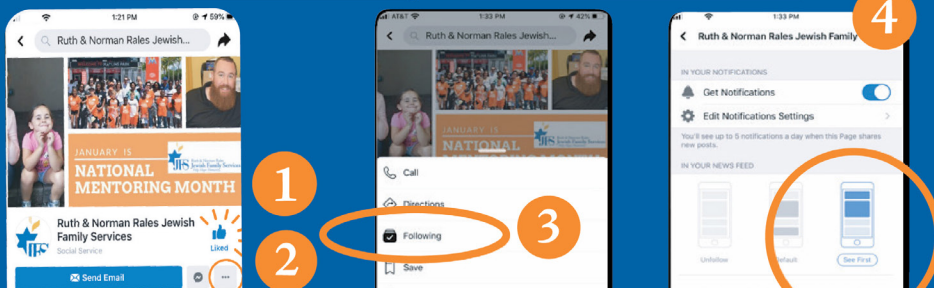
www.facebook.com/ralesjfs

1 Click the "Like" button

3 Click on Following

2 Click the button with the three dots

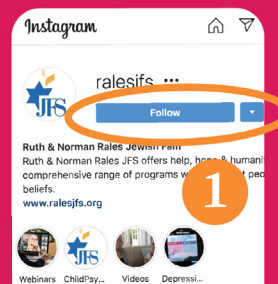
4 Select "See First"



How to follow JFS' Instagram Page GO TO

www.instagram.com/ralesjfs

1 Click follow button



And now on LinkedIn: www.linkedin.com/company/ralesjfs